

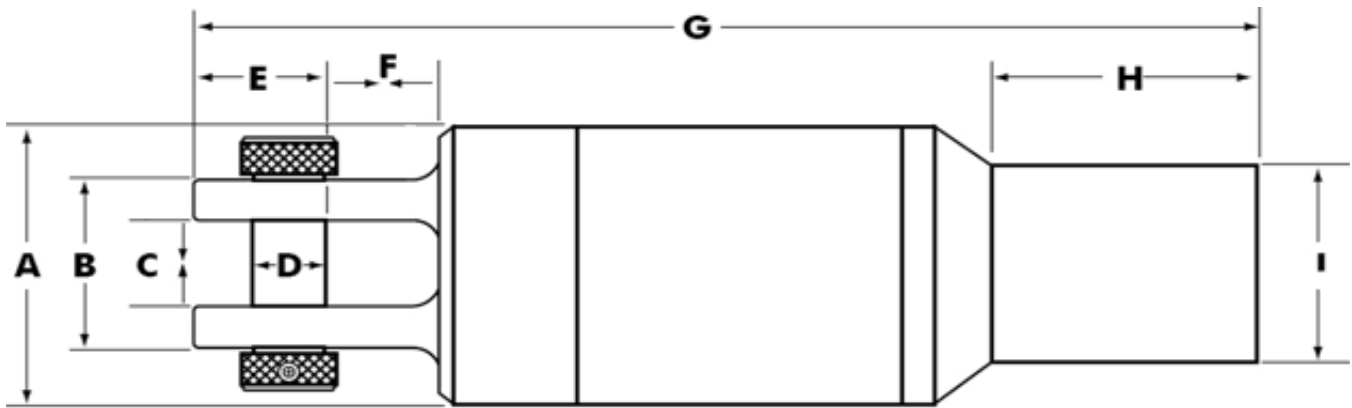


HORIZONTAL TECHNOLOGY, INC.
12029 BRITTMOORE PARK DRIVE
HOUSTON, TEXAS 77041
713-774-5594 - Phone
713-466-7552 - Fax

HORIZONTAL TECHNOLOGY of CANADA, INC.
BAY#1 1317-10th STREET
NISKU, ALBERTA T9E 8L6
CANADA
780-955-0233 - Phone
780-955-0248 - Fax

Toll Free: 888-556-5511 (US and Canada)
Website: www.HorizontalTech.com
Email: drill@horizontaltech.com

Horizontal Technology Swivels



Part Numbers H1001-40 through H1001-160

	H1001-40	H1001-60	H1001-80	H1001-120	H1001-160
Capacity	40,000 lb	60,000 lb	80,000 lb	120,000 lb	160,000 lb
	177.8 kN	266.7 kN	355.5 kN	533.3 kN	711.1 kN
Bearing Static Rating	92,000 lb	206,000 lb	281,000 lb	405,000 lb	562,000 lb
	408.0 kN	915.0 kN	1250.0 kN	1800.0 kN	2500.0 kN
API BOX Thread	2 3/8 IF	2 7/8 IF	4 1/2 IF	4 1/2 IF	4 1/2 IF
Weight	101 lb	97 lb	152 lb	265 lb	388 lb
	46 kg	44 kg	69 kg	120 kg	176 kg
A (OD)	5.91"	6.30"	7.09"	8.66"	10.24"
	150 mm	160 mm	180 mm	220 mm	260 mm
B	3.54"	4.33"	4.92"	6.30"	7.09"
	90 mm	110 mm	125 mm	160 mm	180 mm
C (Between Clevis)	1.57"	1.97"	2.56"	3.15"	3.54"
	40 mm	50 mm	65 mm	80 mm	90 mm
D (Pin)	1.65"	1.97"	2.36"	2.95"	3.35"
	42 mm	50 mm	60 mm	75 mm	87 mm
E	2.40"	2.99"	3.58"	4.49"	5.06"
	61 mm	76 mm	91 mm	114 mm	128.5 mm
F	2.17"	2.52"	2.91"	5.31"	5.24"
	55 mm	64 mm	74 mm	97 mm	111.5 mm
G (Length)	19.09"	20.47"	24.59"	29.09"	32.68"
	485 mm	520 mm	624.5 mm	739 mm	830 mm
H (Box Length)	3.50"	3.94"	7.09"	7.17"	7.87"
	89 mm	100 mm	180 mm	182 mm	200 mm
I (Box O.D.)	4.45"	4.13"	6.61"	6.61"	6.61"
	113 mm	105 mm	168 mm	168 mm	168 mm

Part Numbers H1001-200 through H1001-1000

	H1001-200	H1001-300	H1001-500	H1001-750	H1001-1000
Capacity	200,000 lb	300,000 lb	500,000 lb	750,000 lb	1,000,000 lb
	888.9 kN	1,333 kN	2222.2 kN	3333.3 kN	4444.4 kN
Bearing Static Rating	674,000 lb	967,000 lb	1,650,000 lb	2,900,000 lb	5,040,000 lb
	3000.0 kN	4300.0 kN	7350.0 kN	12,900.0 kN	22,400 kN
API BOX Thread	4 1/2 IF	4 1/2 IF	6 5/8 FH	6 5/8 FH	7 5/8 REG
Weight	509 lb	941 lb	1,900 lb	3142 lb	5,800 lb
	231 kg	427 kg	862 kg	1425 kg	2631 kg
A (OD)	11.42"	13.39"	16.54"	21.65"	23.62"
	209 mm	340 mm	420 mm	550 mm	600 mm
B	7.87"	8.07"	11.42"	13.58"	15.75"
	200 mm	205 mm	290 mm	345 mm	400 mm
C (Between Clevis)	3.94"	4.13"	6.30"	6.89"	7.87"
	100 mm	105 mm	160 mm	175 mm	200 mm
D (Pin)	3.74"	3.94"	5.91"	6.89"	8.07"
	95 mm	100 mm	150 mm	175 mm	205 mm
E	5.65"	5.94"	8.90"	10.39"	11.93"
	143.5 mm	151 mm	226 mm	264 mm	303 mm
F	4.98"	5.24"	7.24"	11.93"	9.17"
	126.5 mm	133 mm	184 mm	264 mm	233 mm
G (Length)	34.67"	40.59"	49.41"		61.42"
	880.5 mm	1031 mm	1255 mm		1560 mm
H (Box Length)	7.37"	7.24"	7.09"		5.83"
	187.3 mm	184 mm	180 mm		148 mm
I (Box O.D.)	6.61"	6.61"	8.66"	8.66"	11.81"
	168 mm	168 mm	220 mm	220 mm	300 mm